

LED.CO.UK

HAZX TITAN



ABOUT US

LED.CO.UK is an International supplier of LED lighting and LED Screen technology. We specialise in complete energy efficient lighting solutions for both new and retrofit applications. We provide the highest quality LED based products by integrating premium components to ensure reliability and optimum performance.

Our service delivers a full bespoke package from site surveys, lighting design, the provision of leading edge screen technology and installation.

THE HAZX RANGE

The HAZX range is designed specifically for hazardous environments which require high performance, high reliability and longevity. Our HAZX products are designed for durability with ATEX and IEC Ex approval for all Zone 1 & Zone 2 and Zone 21 & 22 applications as well as being rated for T4, T5 and T6 environments/locations.

HAZX

TITAN

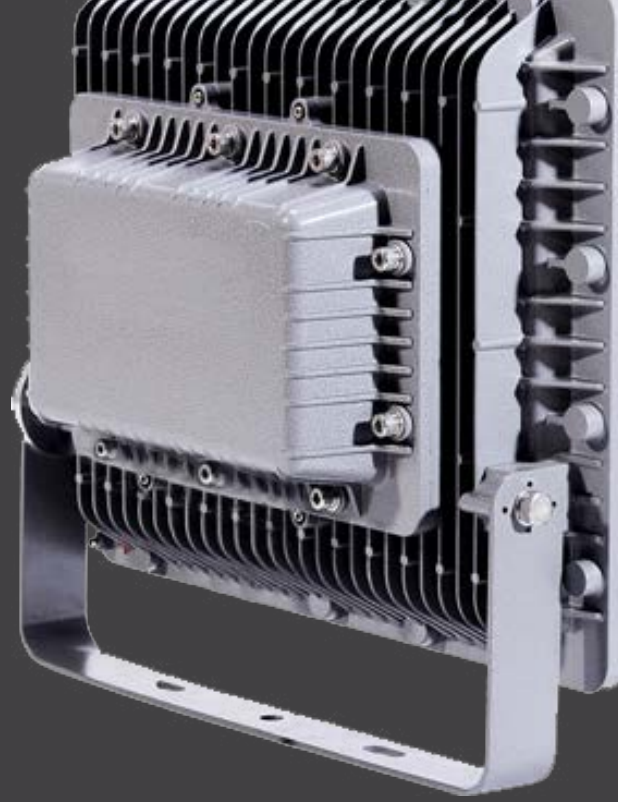


- Cree LEDs
- Zone 1 & 2 (Gas)
- Zone 21 & 22 (Dust)
- Atex Certified
- Honeycomb reflector
- Excellent EMC compatibility
- Dual chamber design
- Over 60,000 hours life span
- 5 Year Warranty

The LED.CO.UK HAZX Titan is available with various exit lumen outputs ranging from 6,000 to 13,000 lumens giving the luminaires versatility for different applications. Accompanying these outputs are a range of optics creating standard beam angle options of 30°, 45° and 60°.

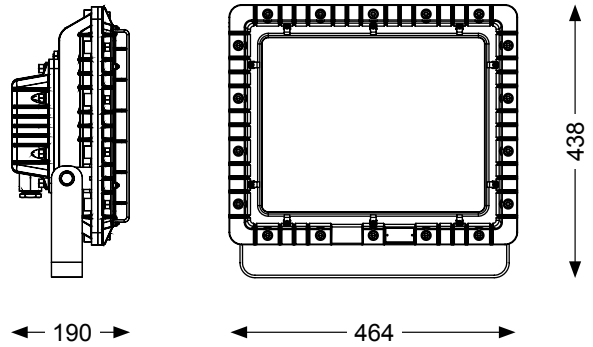
The luminaire is based on a dual chamber structure with the LED light sources and LED driver being housed separately for heat dissipation. The HAZX Titan is finished with an epoxy powder coating with tempered glass lenses and stainless steel fixings.

An optional stainless steel guard is available to replace the standard nickel-plated steel guard for environments where corrosion is a problem.



HAZX

TITAN

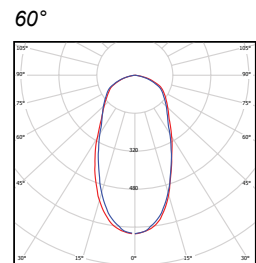
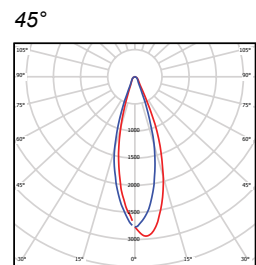
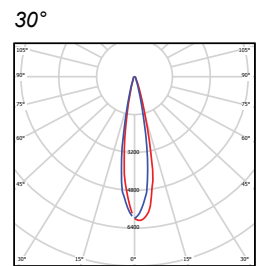


	HAZX-TIN	- XXX	-XX	-XX	-X
		↑	↑	↑	↑
Wattage					
80W	080	—			
120W	120	—			
160W	160	—			
Colour					
3000K (Warm White)	3K	—			
5000K (Cool White)	5K	—			
Beam					
30°	30	—	—		
45°	45	—	—		
60°	60	—	—	—	
Lens Cover					
Nickel Plated Steel	1	—	—	—	
Stainless Steel	2	—	—	—	—

Example of Code:

HAZX-TIN-160-5K-60-2

Wattage: 160W
 Colour: 5000K
 Beam: 60°
 Lens Cover: Stainless Steel



General			
Power	80 W	120 W	160 W
Dimensions	464 x 438 x 190mm		
Weight	19.5 kg		
Installation	Bracket Mount		
Voltage	90 - 260Vac 50/60 Hz		

Performance			
System Power	84.8 W	125.3 W	163.5 W
Exit Lumens	6,360 lm	9,411 lm	13,085 lm
Efficiency	75.0 ll/cW	75.1 ll/cW	80.0 ll/cW
Colour Rendering	Ra>80		
Colour Temperature	3000K / 5000K		
Beam Angle	30° / 45° / 60°		
IP Rating	IP66		
Operating Temp.	-20°C to 60°C		
Longevity	60,000 hours		
Warranty	5 Years		

sales@led.co.uk
www.led.co.uk

LED.CO.UK